



## Join the WEFE4MED NCoP

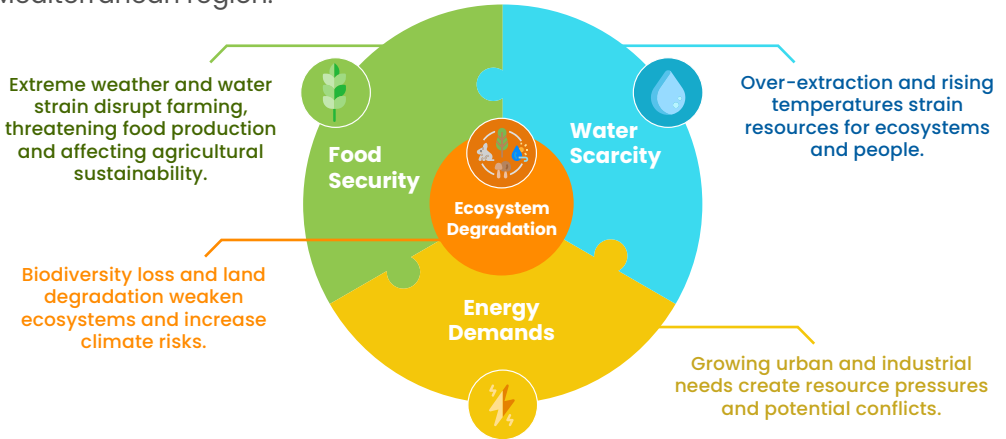
**Working Together for a Sustainable Mediterranean  
Connecting professionals to solve  
Water, Energy, Food, and Ecosystem challenges**



[www.wefe4med.eu](http://www.wefe4med.eu)

## About the NCoP

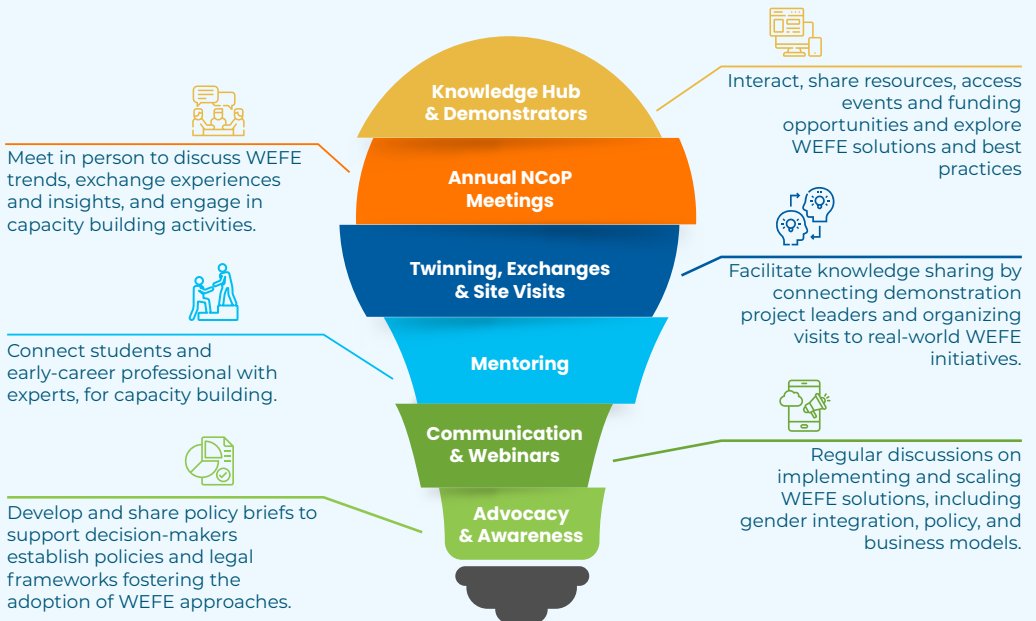
The WEFE4MED Nexus Community of Practice (NCoP) is dedicated to advancing integrated solutions for water, energy, food, and ecosystems (WEFE) in the Mediterranean region.



The NCoP fosters multi-stakeholder collaboration by connecting scientists, policymakers, and practitioners to co-develop and implement WEFE Nexus solutions.

## What We Do

Activities designed to promote co-learning and experience sharing:



# Objectives of the NCoP

The NCoP aims to foster the adoption of integrated WEFE Nexus approaches that maximize synergies and balance trade-offs between socio-economic and environmental sustainability.

## Facilitate

the identification, testing, dissemination, and replication of WEFE Nexus solutions.

## Showcase the advantages

of the WEFE Nexus approach to policymakers and stakeholders through specific demonstration cases.

## Promote the deployment

of regional demonstration sites as laboratories for replication, upscaling, and policy design.

# Who Can Join the NCoP?

Open to professionals from diverse fields including water management, engineering, energy, agriculture, sociology, economics, public administration, gender studies and more.



### Researchers & Scientists

Interested in advancing WEFE solutions.



### Policymakers

Working on sustainable development strategies.



### Practitioners & Innovators

Implementing WEFE projects and driving impact.



### Organizations & Entrepreneurs

Civil society, media, investors and business contributing to WEFE solutions.

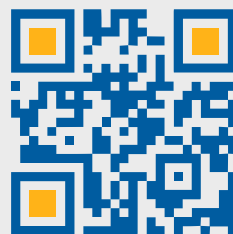
# Benefits for Members

Joining the WEFE NCoP provides:

- ✓ **Visibility and Recognition:** Showcase projects, contributions, and publications.
- ✓ **Access to Knowledge & Resources:** Access research and policy documents, and educational material.
- ✓ **Capacity Building and Growth:** Access tailored internships, training and mentoring programs.
- ✓ **Networking & Collaboration:** Engage in annual meetings, twinning, site-visits, and exchange programs.
- ✓ **Policy Influence & Advocacy:** Contribute to policy shaping and promoting the WEFE Nexus approach.

# Get Involved!

Join the WEFE4MED NCoP to access resources, connect with experts, and advance WEFE solutions.



**scan to join and access resources**



**/Wefe4med**

# Partners



[www.cyi.ac.cy](http://www.cyi.ac.cy)



[www.gwpmed.org](http://www.gwpmed.org)



[www.berytch.org](http://www.berytch.org)



[www.energywateragency.gov.mt](http://www.energywateragency.gov.mt)



[www.ijs.si](http://www.ijs.si)



[www.medcities.org](http://www.medcities.org)



[www.arabwatercouncil.org](http://www.arabwatercouncil.org)



[www.cawtar.org](http://www.cawtar.org)



[www.ecitd.org](http://www.ecitd.org)



[www.gwp.org](http://www.gwp.org)



[www.icarda.org](http://www.icarda.org)

This project is part of the PRIMA programme supported by the European Union



Funded by  
the European Union